

OHSAA 2023 Sectional and District Tournaments



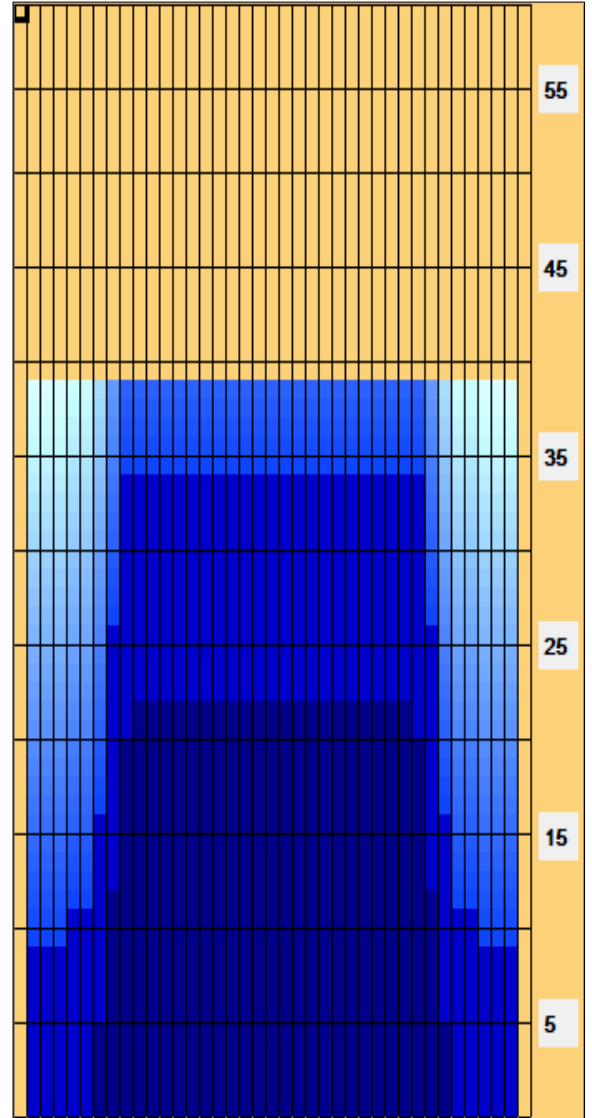
Oil Pattern Distance: 39 Feet	Reverse Brush Drop: 39 Feet	Oil Per Board: 50 uL
Forward Oil Total: 12.8 mL	Reverse Oil Total: 14.55 mL	Volume Oil Total: 27.35 mL
Forward Boards Crossed: 256 Boards	Reverse Boards Crossed: 291 Boards	Total Boards Crossed: 547 Boards

Start	Stop	Loads	Speed	Crossed	Start	End	Feet	T.Oil
1	2L 2R	1	14	37	0.0	0.0	0.0	1850
2	7L 7R	2	18	54	0.0	5.1	5.1	2700
3	8L 8R	3	18	75	5.1	12.7	7.6	3750
4	9L 9R	3	18	69	12.7	20.3	7.6	3450
5	10L 10R	1	18	21	20.3	22.8	2.5	1050
6	2L 2R	0	22	0	22.8	39.0	16.2	0

Conditioner:
Type In or Select One

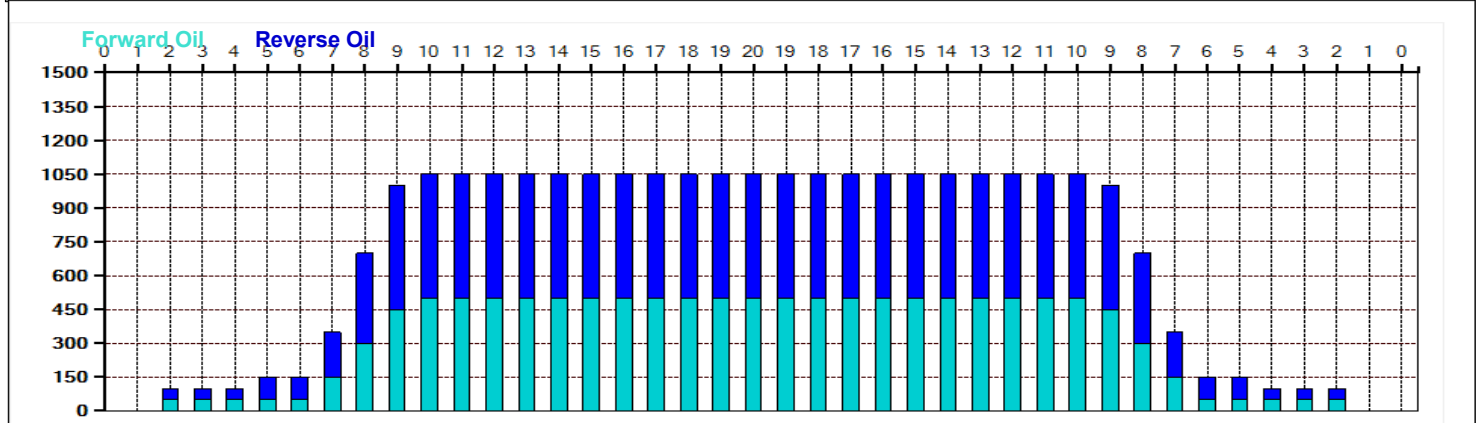
TransferType:
Type In or Select One

- Forward
- Reverse
- Combined
- Buff



Start	Stop	Loads	Speed	Crossed	Start	End	Feet	T.Oil
1	2L 2R	0	30	0	39.0	34.0	-5.0	0
2	9L 9R	3	18	69	34.0	26.4	-7.6	3450
3	8L 8R	4	18	100	26.4	16.2	-10.2	5000
4	7L 7R	2	18	54	16.2	11.1	-5.1	2700
5	5L 5R	1	14	31	11.1	9.2	-1.9	1550
6	2L 2R	1	14	37	9.2	7.3	-1.9	1850
7	2L 2R	0	14	0	7.3	0.0	-7.3	0

Item	3L-7L:18L-18R	8L-12L:18L-18R	13L-17L:18L-18R	18L-18R:17R-13R	18L-18R:12R-8R	18L-18R:7R-3R
Description	Outside Track:Middle	Middle Track:Middle	Inside Track:Middle	Middle: Inside Track	Middle:Middle Track	Middle:Outside Track
Track Zone Ratio	6.18	1.08	1	1	1.08	6.18



-1
OHSAA 2023 Sectional and District Tournaments

1
1
0
720
1
56
57
50
-1
39
34
2
7
8
9
10
2

38
33
32
31
30
38

1
2
3
3
1
0

14
18
18
18
18
22

2
9
8
7
5
2
2

38
31
32
33
35
38
38

0
3
4
2
1
1
0

30
18
18
18
14
14
14

0
5.1
12.7
20.3
22.8
39

2L
7L
8L
9L
10L
2L

2R
7R
8R
9R
10R
2R

2L
9L
8L
7L
5L
2L
2L

2R
9R
8R
7R

5R
2R
2R

34
26.4
16.2
11.1
9.2
7.3
0

0
0
0
0
0
0
0
0
0
0
0
716
9
135
200
190
190
0
50
0
12
716
0

39
4
4542
0
0
39