

OHSAA 2022 Sectional and District Tournaments



Oil Pattern Distance: 41 Feet	Reverse Brush Drop: 41 Feet	Oil Per Board: 50 uL
Forward Oil Total: 13.1 mL	Reverse Oil Total: 13.9 mL	Volume Oil Total: 27 mL
Forward Boards Crossed: 262 Boards	Reverse Boards Crossed: 278 Boards	Total Boards Crossed: 540 Boards

Start	Stop	Loads	Speed	Crossed	Start	End	Feet	T.Oil
1	2L 2R	2	14	74	0.0	1.9	1.9	3700
2	9L 9R	1	14	23	1.9	3.8	1.9	1150
3	10L 10R	2	18	42	3.8	8.9	5.1	2100
4	11L 11R	3	18	57	8.9	16.5	7.6	2850
5	12L 12R	3	18	51	16.5	24.1	7.6	2550
6	13L 13R	1	18	15	24.1	26.6	2.5	750
7	2L 2R	0	22	0	26.6	41.0	14.4	0

Navigation: Forward Reverse More

Start	Stop	Loads	Speed	Crossed	Start	End	Feet	T.Oil
1	2L 2R	0	30	0	41.0	35.0	-6.0	0
2	12L 12R	1	22	17	35.0	31.9	-3.1	850
3	11L 11R	2	18	38	31.9	26.8	-5.1	1900
4	10L 10R	3	18	63	26.8	19.2	-7.6	3150
5	9L 9R	3	18	69	19.2	11.6	-7.6	3450
6	7L 7R	2	14	54	11.6	7.7	-3.9	2700
7	2L 2R	1	14	37	7.7	5.8	-1.9	1850
8	2L 2R	0	14	0	5.8	0.0	-5.8	0

Navigation: Forward Reverse More

Conditioner:
Type In or Select One

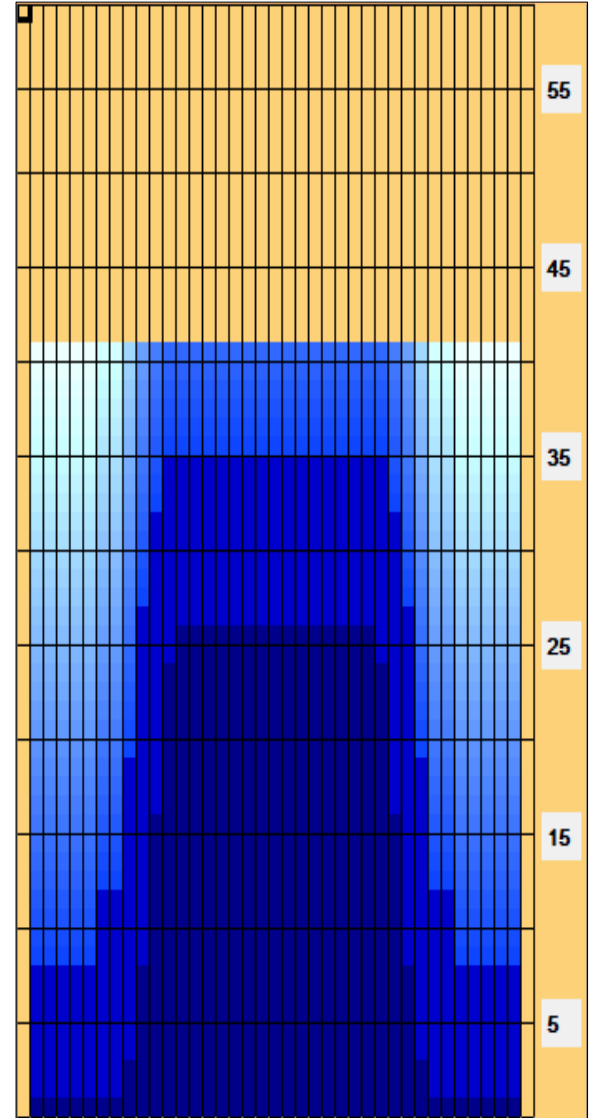
TransferType:
Type In or Select One

Forward

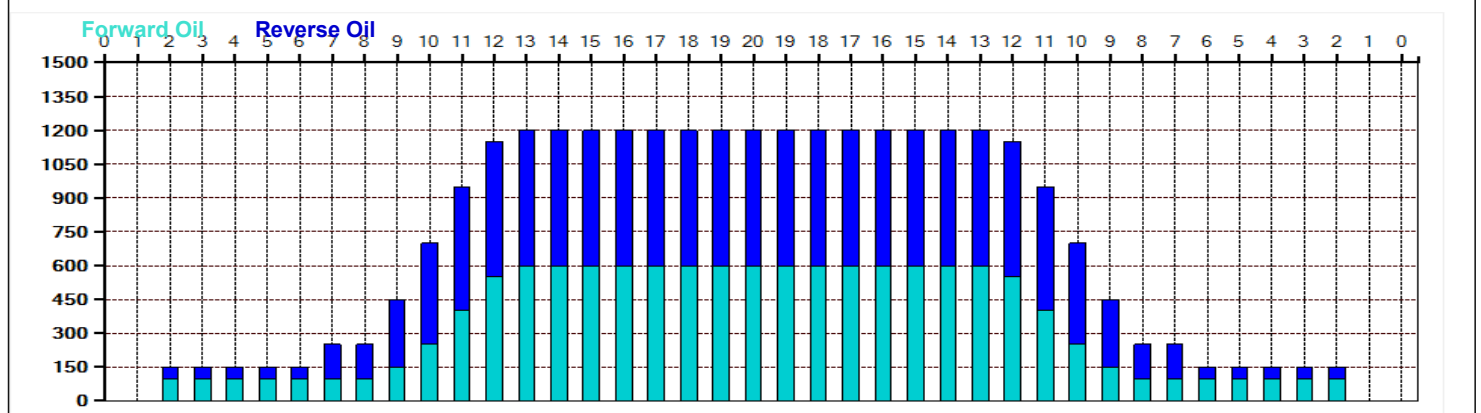
Reverse

Combined

Buff



Item	3L-7L:18L-18R	8L-12L:18L-18R	13L-17L:18L-18R	18L-18R:17R-13R	18L-18R:12R-8R	18L-18R:7R-3R
Description	Outside Track:Middle	Middle Track:Middle	Inside Track:Middle	Middle: Inside Track	Middle:Middle Track	Middle:Outside Track
Track Zone Ratio	7.06	1.71	1	1	1.71	7.06



-1
OHSAA 2022 Sectional and District Tournaments

1
1
0
720
1
56
57
50
-1
41
35
2
9
10
11
12
13
2

38
31
30
29
28
27
38

2
1
2
3
3
1
0

14
14
18
18
18
18
22

2
12
11
10
9
7
2
2

38
28
29
30
31
33
38
38

0
1

2
3
3
2
1
0

30
22
18
18
18
14
14
14

1.9
3.8
8.9
16.5
24.1
26.6
41

2L
9L
10L
11L
12L
13L
2L

2R
9R
10R
11R
12R
13R
2R

2L
12L
11L
10L
9L
7L
2L
2L

2R
12R
11R
10R
9R
7R
2R
2R

35
31.9
26.8
19.2

11.6
7.7
5.8
0

0
0
0
0
0
0
0
0
0
0
0
0
716
9
135
200
190
190
0
50
0
12
716
0
41
4
4542
0
0
41