

OHSAA 2024 Sectional and District Tournaments



Oil Pattern Distance: 40 Feet	Reverse Brush Drop: 40 Feet	Oil Per Board: 50 uL
Forward Oil Total: 15.2 mL	Reverse Oil Total: 13.5 mL	Volume Oil Total: 28.7 mL
Forward Boards Crossed: 304 Boards	Reverse Boards Crossed: 270 Boards	Total Boards Crossed: 574 Boards

Start	Stop	Loads	Speed	Crossed	Start	End	Feet	T.Oil
1	2L 2R	1	14	37	0.0	0.0	0.0	1850
2	7L 7R	2	18	54	0.0	5.1	5.1	2700
3	8L 8R	4	18	100	5.1	15.3	10.2	5000
4	9L 9R	4	18	92	15.3	25.5	10.2	4600
5	10L 10R	1	18	21	25.5	28.0	2.5	1050
6	2L 2R	0	22	0	28.0	40.0	12.0	0

Forward Reverse More

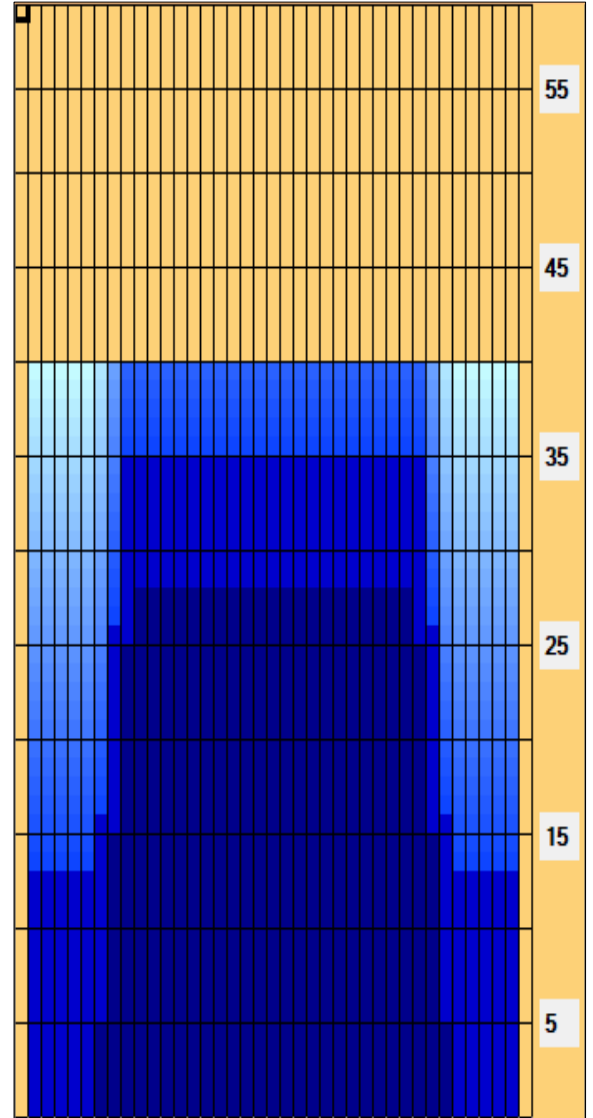
Start	Stop	Loads	Speed	Crossed	Start	End	Feet	T.Oil
1	2L 2R	0	30	0	40.0	35.0	-5.0	0
2	9L 9R	3	22	69	35.0	25.7	-9.3	3450
3	8L 8R	4	18	100	25.7	15.5	-10.2	5000
4	7L 7R	1	18	27	15.5	13.0	-2.5	1350
5	2L 2R	2	18	74	13.0	7.9	-5.1	3700
6	2L 2R	0	18	0	7.9	0.0	-7.9	0

Forward Reverse More

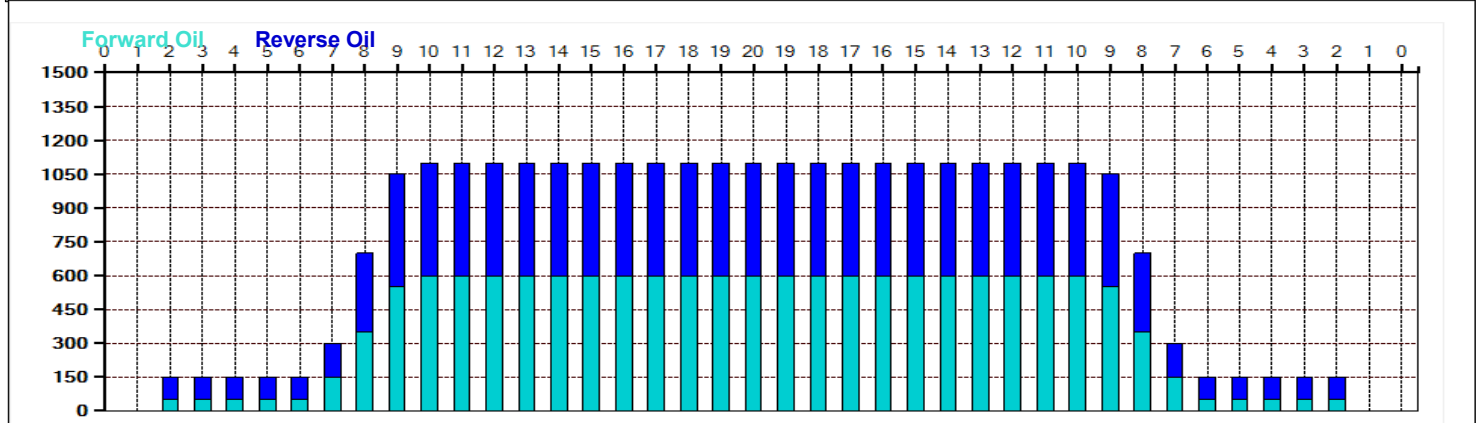
Conditioner:
Type In or Select One

TransferType:
Type In or Select One

- Forward
- Reverse
- Combined
- Buff



Item	3L-7L:18L-18R	8L-12L:18L-18R	13L-17L:18L-18R	18L-18R:17R-13R	18L-18R:12R-8R	18L-18R:7R-3R
Description	Outside Track:Middle	Middle Track:Middle	Inside Track:Middle	Middle: Inside Track	Middle:Middle Track	Middle:Outside Track
Track Zone Ratio	6.11	1.09	1	1	1.09	6.11



-1
OHSAA 2024 Sectional and District Tournaments

1
1
9
720
1
56
57
50
-1
40
35
2
7
8
9
10
2

38
33
32
31
30
38

1
2
4
4
1
0

14
18
18
18
18
22

2
9
8
7
2
2

38
31
32
33
38
38

0
3
4
1
2
0

30
22
18
18
18
18

0
5.1
15.3
25.5
28
40

2L
7L
8L
9L
10L
2L

2R
7R
8R
9R
10R
2R

2L
9L
8L
7L
2L
2L

2R
9R
8R
7R

2R
2R

35
25.7
15.5
13
7.9
0

0
0
0
0
0
0
0
0
0
0
0
716
9
135
200
190
190
0
50
0
12
716
0

40
4
4542
0
0
40